

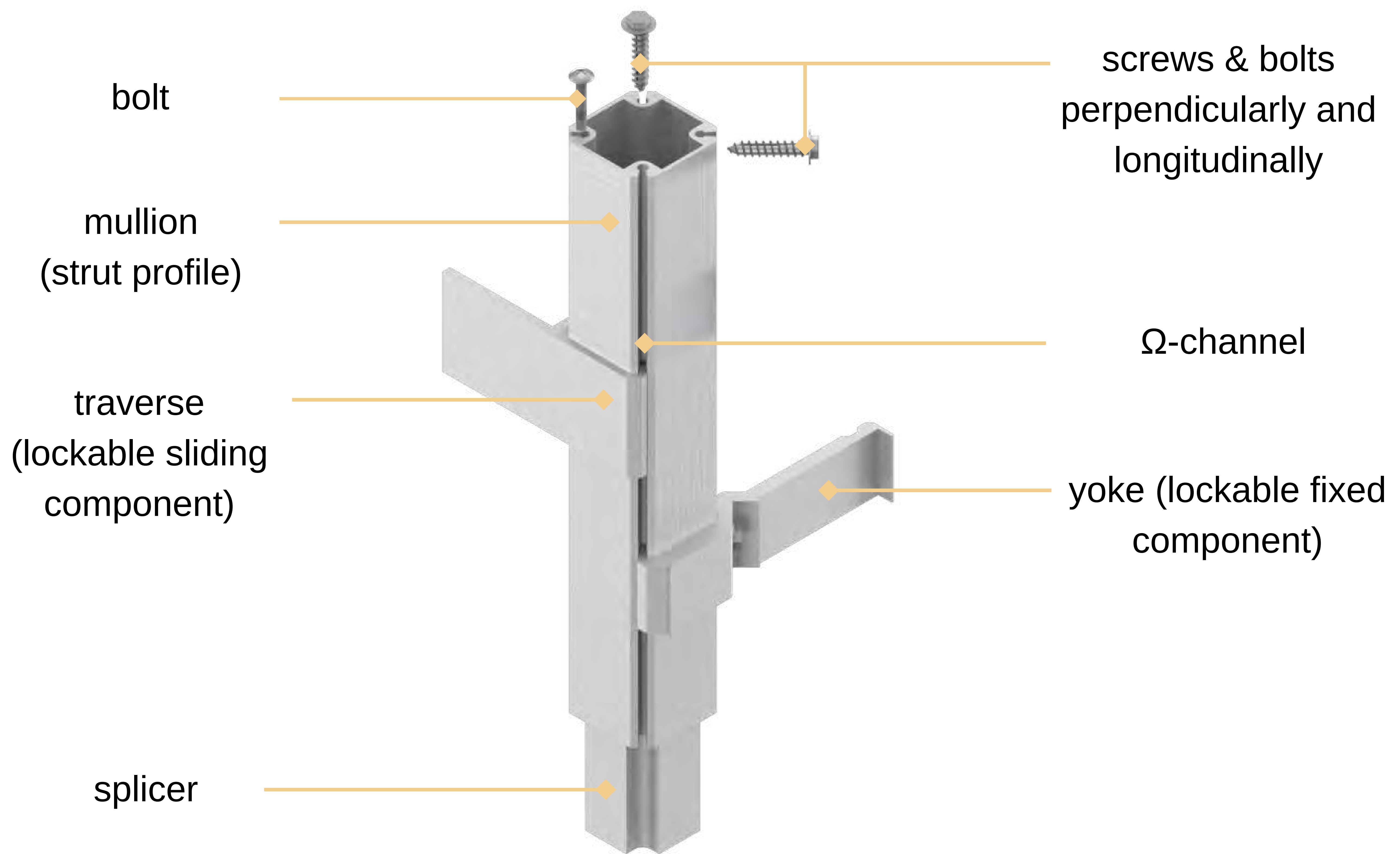
### Systems for any:

- cladding material (incl. BiPV)
- panel fixing method
- size & configuration (incl. trays, large size sheet)
- façade pattern and feature

## Complete solution for any cladding



# BILDA® mullion - multifunctional & rigid



Composes light and resilient substructure grids and allows:

- horizontal positioning for “portrait” oriented cladding panel
- quick locking attachment of components - dual penetration and fixing
- pre-assembly of frames and units by means of simple screwing and without welding

# BILDA® components - integral & interlocking

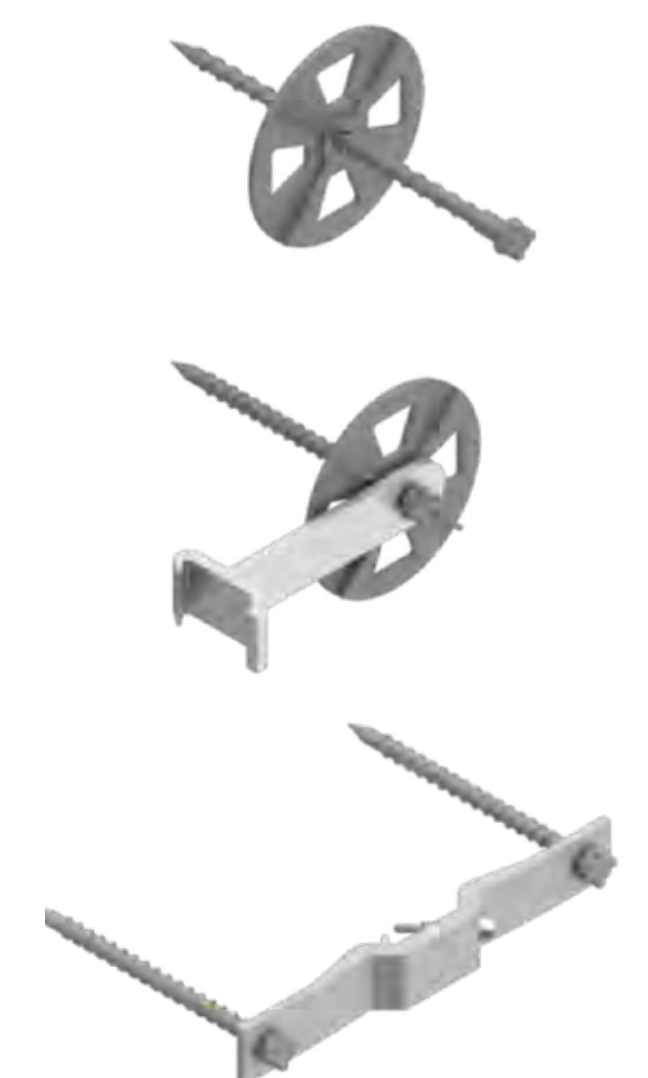
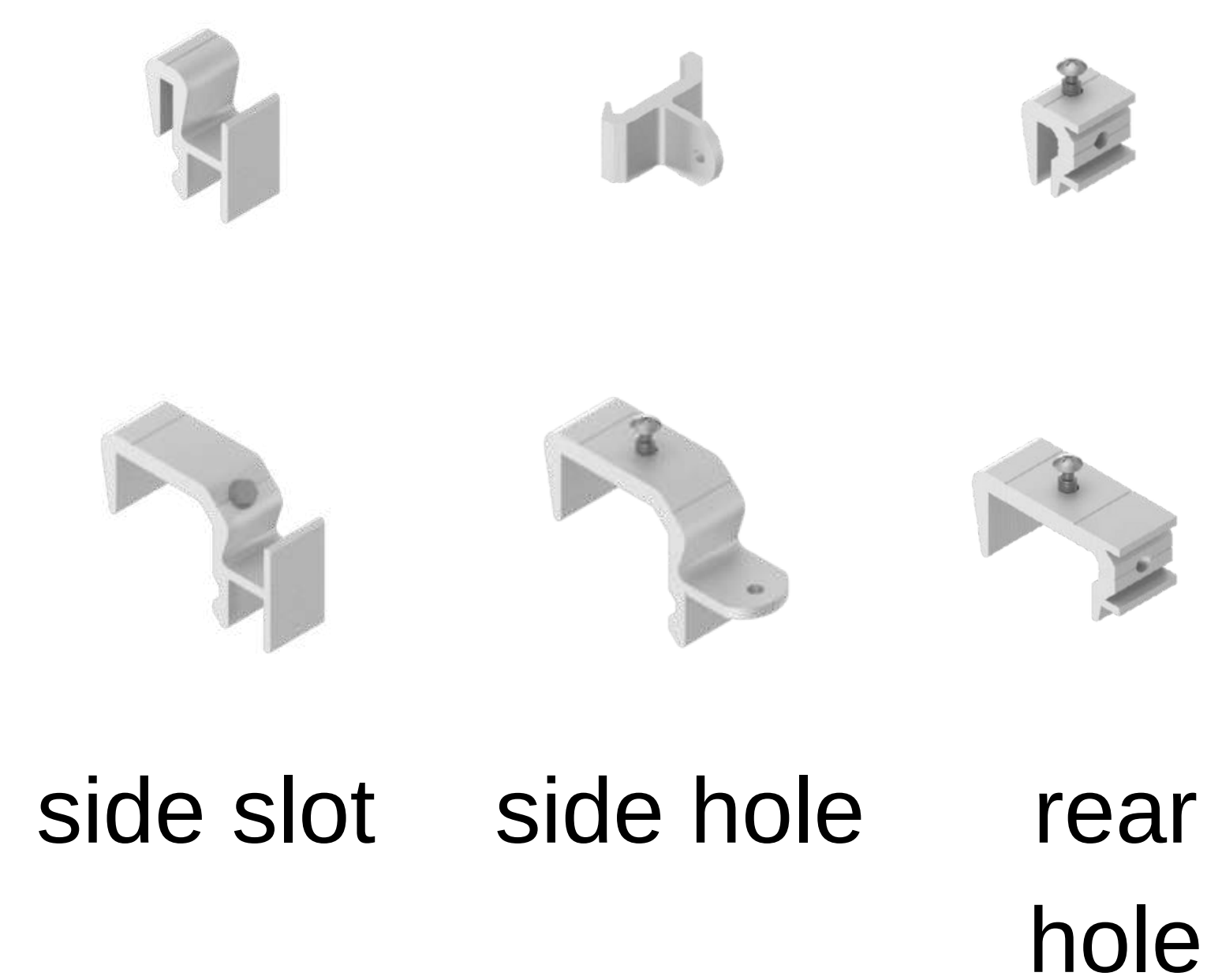
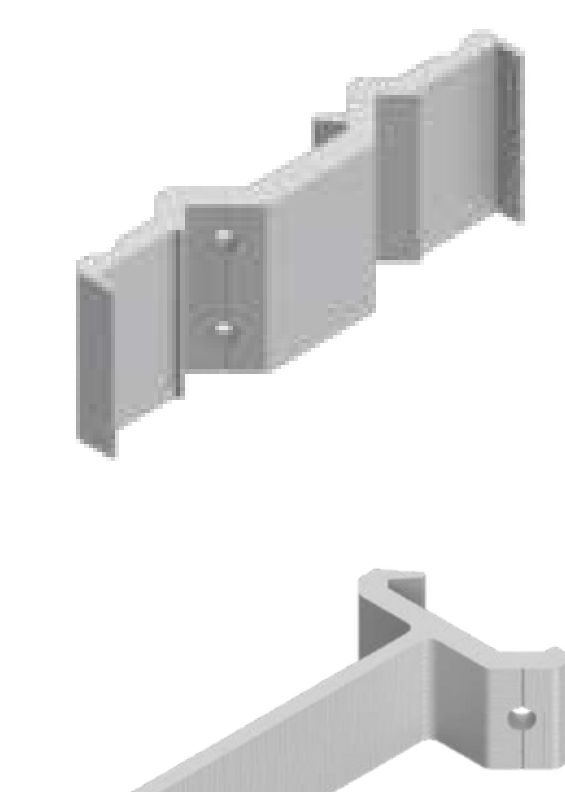
wall brackets

mullions (strut profiles)

yokes

clips

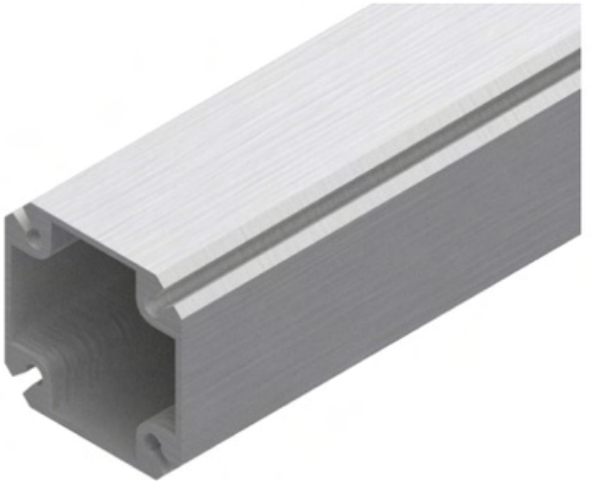
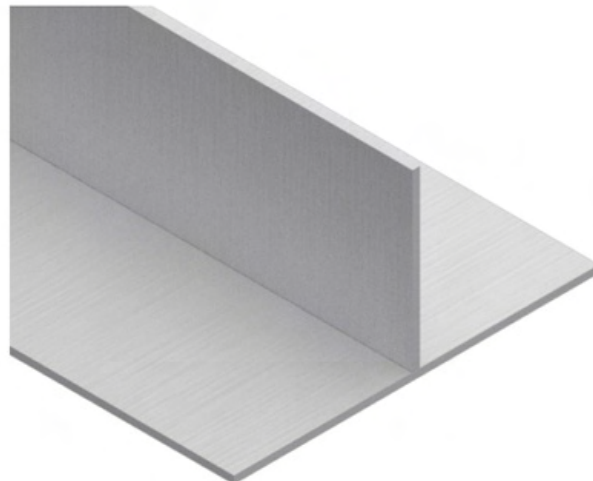
insulation & firestop fixers



- Simple and interactive inventory for the whole rainscreen envelope (cladding & insulation)
- Interchangeable, inter-lockable, multifunctional components
- Facilitating accessories (scaffolding clamps, fire barrier fixers)



**Structural Concept Comparison**

	profile type	
closed section patent profile		open section simple profile
<b>1100 g/m</b>	profile weight	<b>1200 g/m</b>
<b>4.69 cm<sup>3</sup></b>	section modulus (resilience indicator)	<b>2.60 cm<sup>3</sup></b>
<b>1 bracket 1 brace</b>	attachments per floor height	<b>4-5 brackets</b>

**BILDA - creates leaner yet stronger assemblies:**

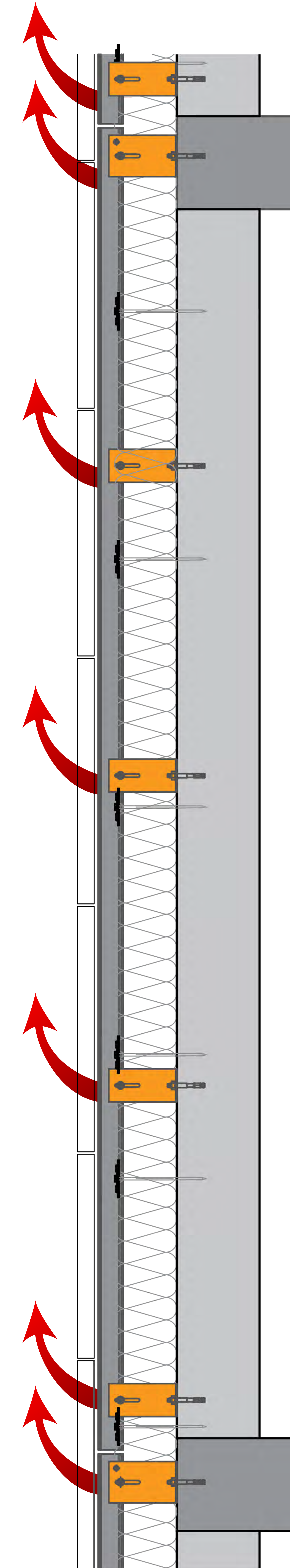
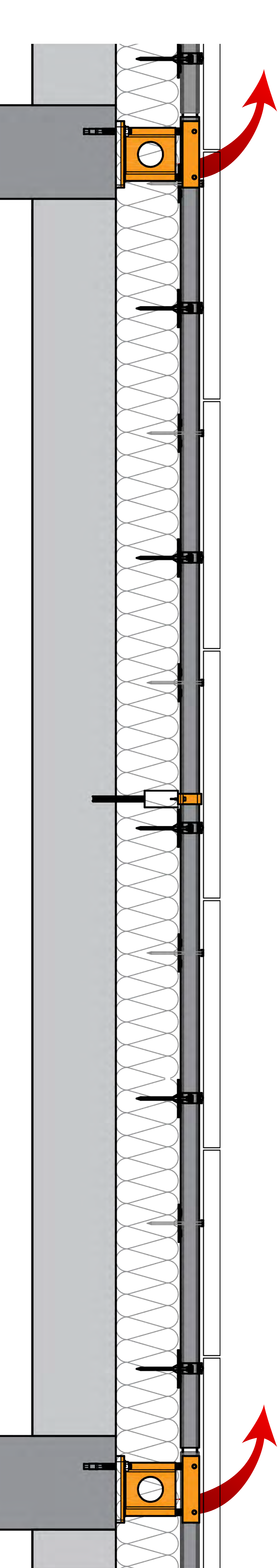
- saves substructure and envelope material
- saves installation and production time
- achieves lowest embodied Carbon

**Thermal Performance Comparison**

SS & Al	bracket material (SS less conductive)	Al
<b>Advanced</b>	bracket thermal performance (acc. to PH Institute)	<b>Basic</b>
<b>0.25/m<sup>2</sup></b>	brackets per square meter	<b>1.20/m<sup>2</sup></b>
<b>0.014 W/m<sup>2</sup>K</b>	overall envelope heat loss (ΔU) (acc. to PH Institute)	<b>0.030 W/m<sup>2</sup>K</b>

**BILDA - unmatched thermal performance:**

- minimizes thermal bridging of the building envelope
- achieves lowest operational Carbon





# BILDA® one SuperSystem for any cladding



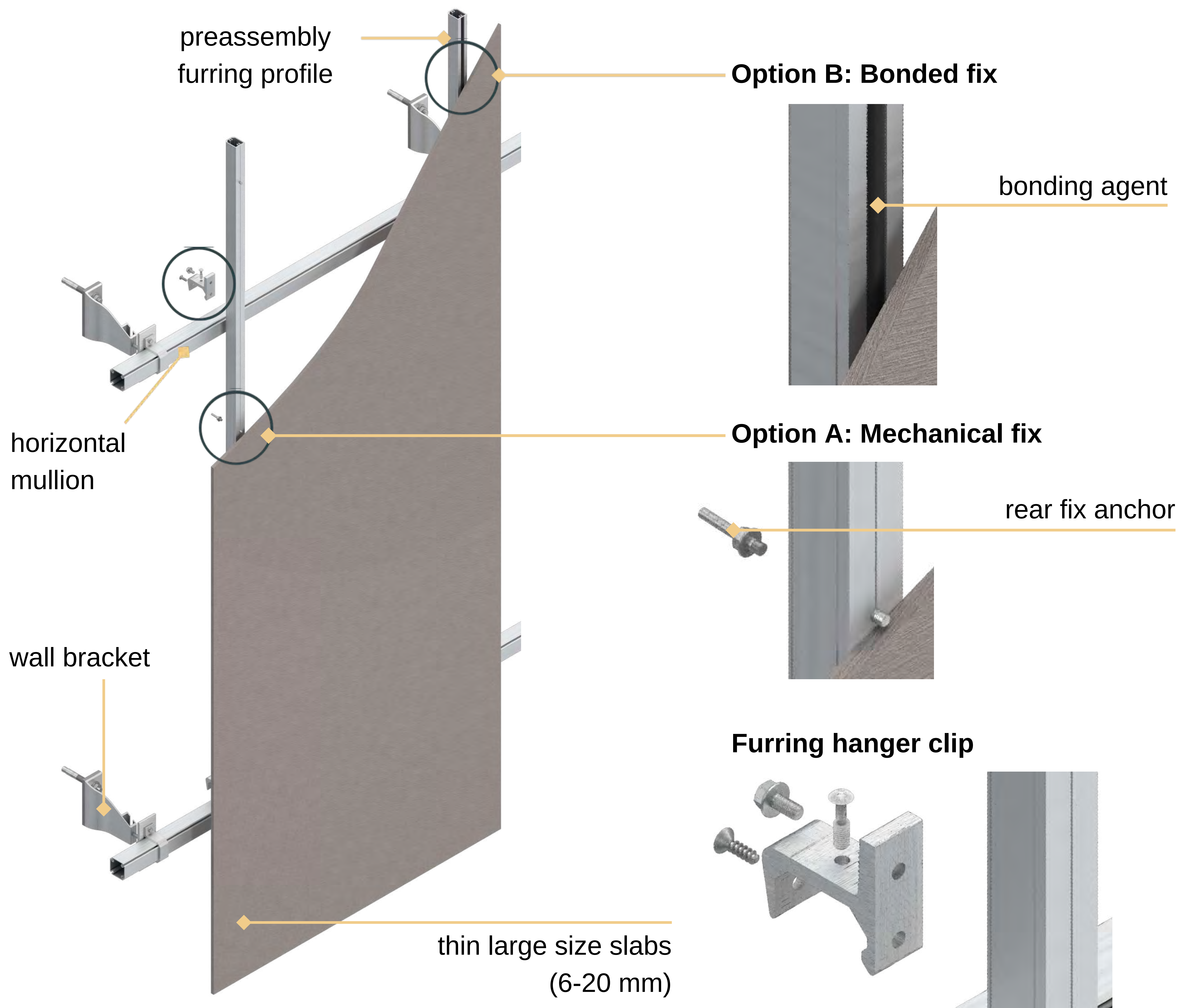
side "precision" slot  
(recommended)



side hole



rear hole  
(straight, undercut)



- Variety of clips for all panel fixing methods (slot, side and rear)
- Furring for large size thin panels - mechanical & bonded



# BILDA® advantages and benefits for all stakeholders



## Architects

- unleash creativity
- design sustainably
- minimize constraints
- regain & retain control



## Façade Engineers

- optimize processes
- design with confidence
- unleash productivity
- minimize carbon footprint



## General Contractors

- simplify management
- optimize coordination
- improve QC
- control schedule



## Envelope Installers

- improve productivity
- increase profitability
- enjoy work facility
- enhance proposition



## Materials Manufacturer

- enjoy technical support
- improve coordination with planners
- expand business horizon
- add value to your proposal



## Commercial Partner

- increase profitability
- enjoy sales growth
- support customers easily
- expand market share



## Unique Concept

Mullion - resilient & multi-functional

Components - integral & interlocking

One SuperSystem - for any cladding

Cladding assemblies - optimized, lean, min thermal bridging



## Basic Advantages

Provides optimized solutions

Lego-like simple connections

Simplifies envelope creation process

Facilitates low Carbon solutions



## Benefits in Numbers

**20-30%**

Savings on envelope materials

**50-60%**

Savings on installation expense

**30-40%**

Savings on management time

**60-70%**

Reduction of Carbon footprint

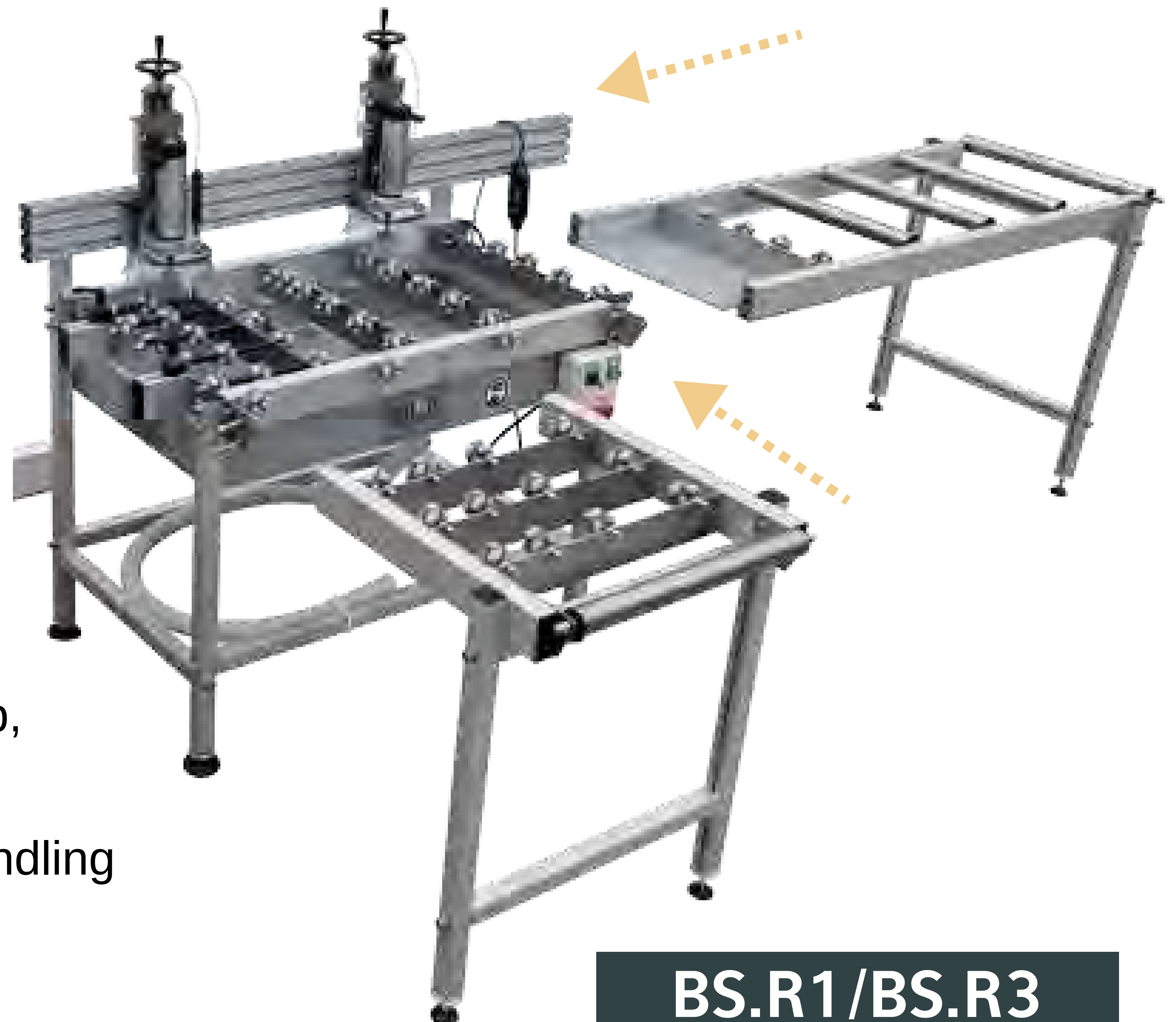


# BILDA<sup>®</sup> panel fixing socket processing

**Machinery, tools, instruments** for slotting, drilling, milling for any method of cladding panel attachment; for any material, any configuration (solid/tray); for the factory, building site, scaffolding.

## Slotting, Drilling & Milling Rig

- produces all types of fixing sockets for cladding panels (precision side slot, side hole and rear hole)
- highly efficient, fast and multifunctional
- light-weight (59-76 kg)- for factory, workshop, project site
- multidirectional rolling wheels allow easy handling



**BS.R1/BS.R3**

## Handheld tool

- light (4.7kg), compact and portable
- water cooled cutting/drilling
- produces all type of “sockets”
- stable and easy to operate
- suction cup model available
- low cost



**BSD.R1/BSD.R3**

## Instruments

- diamond, widia, carbo-flex
- milling wheels for BILDA precision slot (52/2.6mm, 58/3.6mm), bespoke sizes available on demand
- drilling bits for holes of 6,8,10 and 12 mm diameter
- usable with other machines and tools - CNC, standard handheld routers, angle grinders, etc.



Drilling bits and extractor

Diamond milling wheels



# BILDA® projects in over 20 countries



**De Zalmhaven Toren,  
Rotterdam, The Netherlands**



**Onyx, Frankfurt,  
Germany**



**The Foundation Parnell,  
Auckland, New Zealand**



**University Sports Complex,  
Kuwait**

## Services & Support

Façade consulting | Planning & shop drawings | Static calculations |  
Design/Installation training | Custom project package | Free technical support



scan to  
download  
BILDA  
catalogue

**Internationally:**



3A Ivan Borimechkata Str., 1756 Sofia



+359 2 9744 888;

+359 899 992 992



bilda@stoa.net



www.bilda.net

**SE Asia, AU/NZ:**



www.bilda.nz

Book a meeting | Send us your project for a technical solution and quote!