

# BILDA Thermal Insulation (outside) fixing method

- The only existing method for fixing thermal insulation to the substructure instead of fixing it to the primary building
- Unique & best method for retrofit of the dry wall



**SUSTAINABLE**



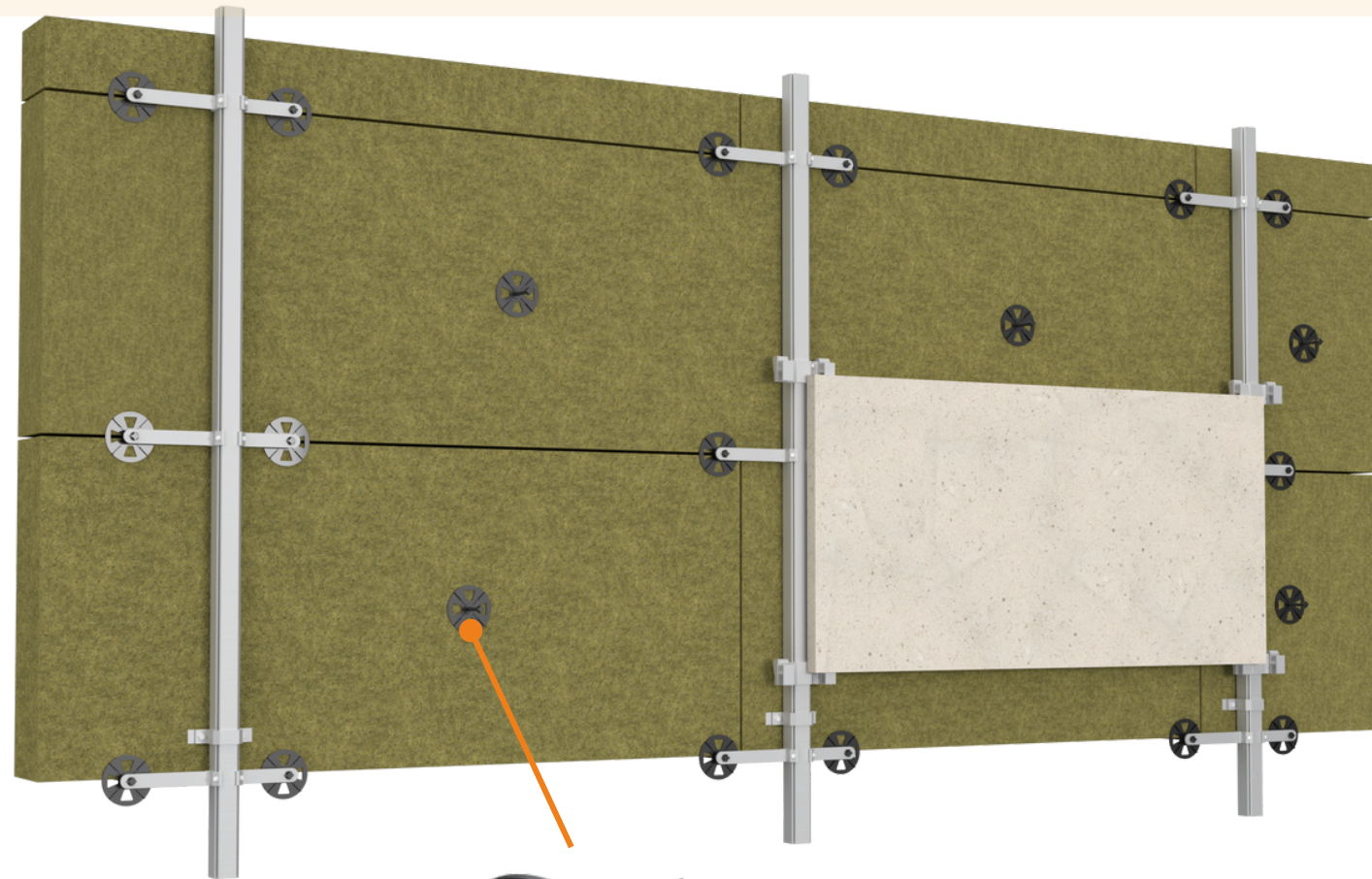
**QUICK & EASY**



**LOW COST**

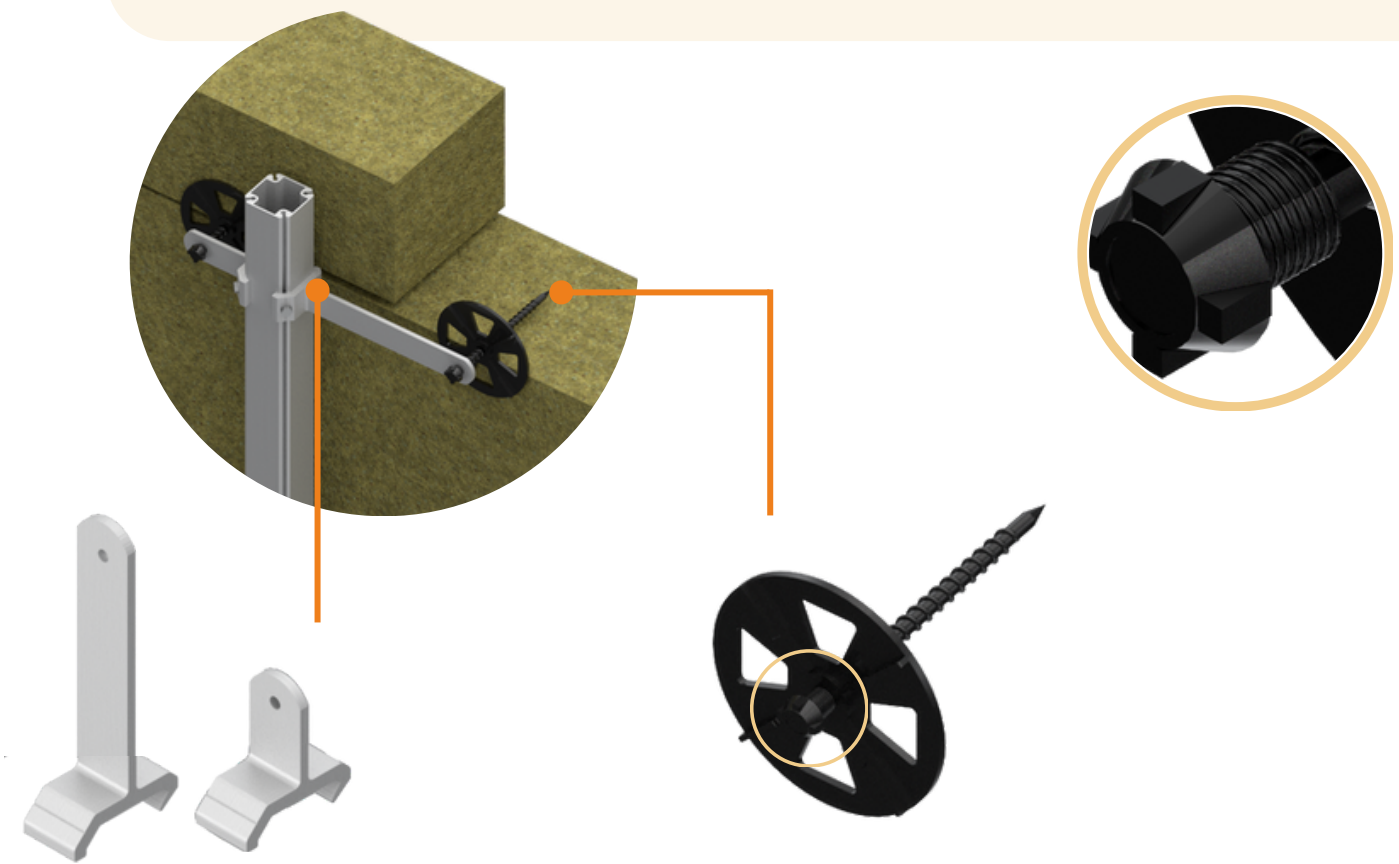


**HIGHLY RECOMMENDED**



**01**

**RETAINING INSULATION ANCHOR**  
- Presses insulation against the cladding panels to avoid sagging of insulation



**02**

**INSULATION YOKE**  
- Fixes the supporting insulation anchor to the substructure

**03**

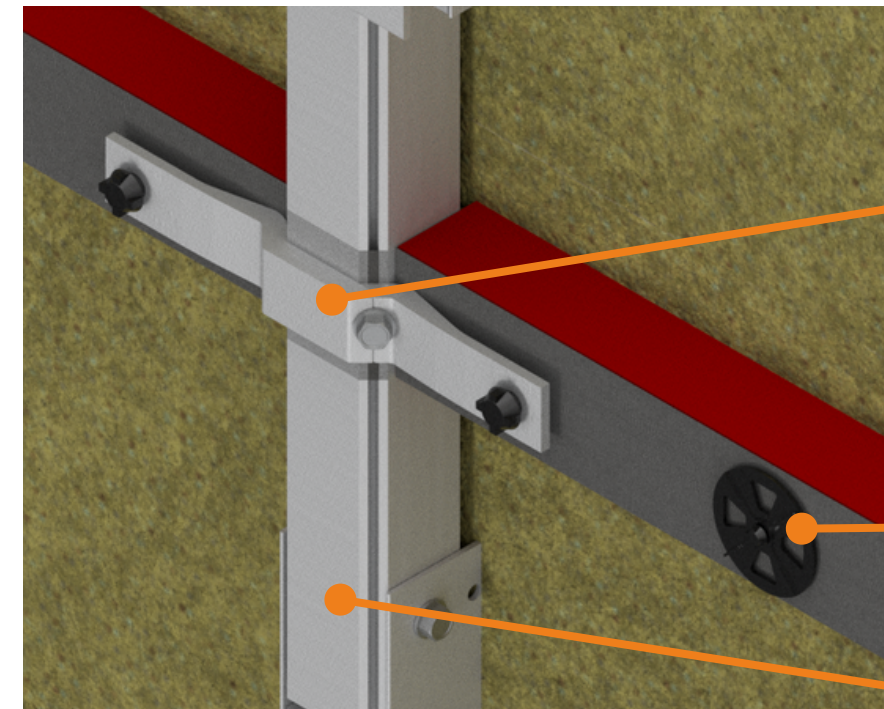
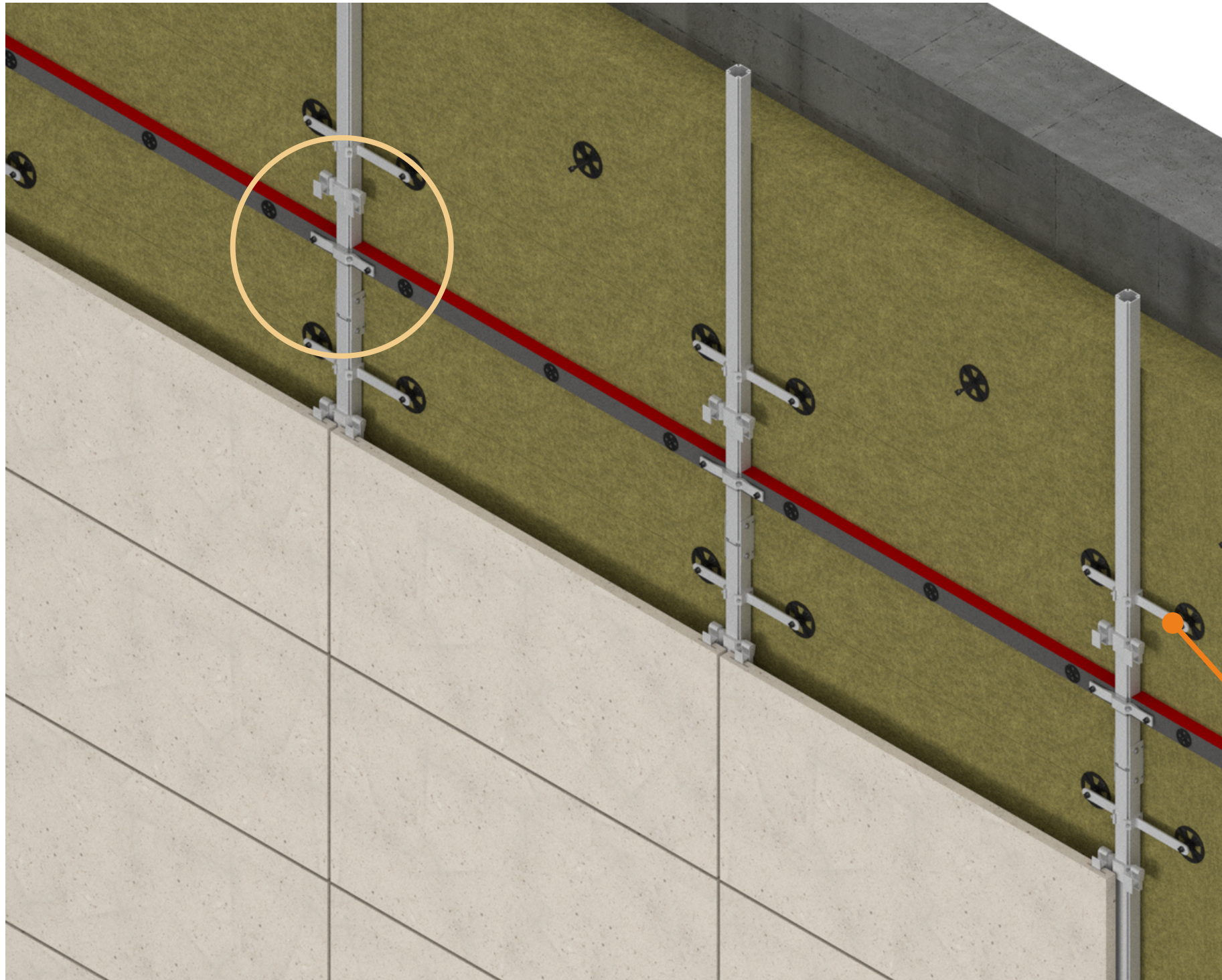
**SUPPORTING INSULATION ANCHOR**  
- Supports & presses the insulation against the primary structure, without a direct connection

- Fixes insulation to the substructure  
- **Secure & controllable method of fixing**
- Continuous insulation achieved  
- **Tighter fit - No thermal bridges**
- Optimized components  
- **Lower cost of fastening materials**
- Minimum damage to insulation  
- **Allows reuse**



# BILDA Fire stop fixing method

Fixing methods for fire barriers in ventilated façade



03

01

INTUMESCENT TAPE  
STICKED ON THE  
PROFILE SURFACE

01



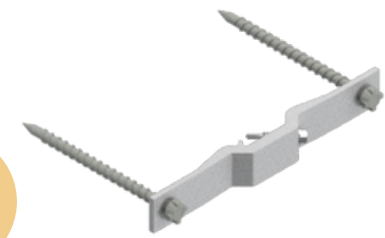
RETAINING INSULATION ANCHOR - PRESSES  
FIRESTOP AGAINST THERMAL INSULATION

02



INSULATION YOKE & SUPPORTING  
INSULATION ANCHOR

03



FIRE STOP FIXING YOKE &  
SUPPORTING INSULATION  
ANCHOR